

TECHNICAL SCIENTIFIC REPORT

PASSIFLOWER DRY EXTRACT

(*Passiflora incarnata* L.)

BOTANICAL DESCRIPTION:

Dried cut aerial part of *Passiflora incarnata* L.

Accurate selection and identification of Passionflower aerial part according to current monograph of European Pharmacopoeia "1459: Passionflower herb".



EXTRACT INFORMATION:

PASSIFLOWER DRY EXTRACT is obtained from aerial part of *Passiflora incarnata* L. by hydroalcoholic extraction.

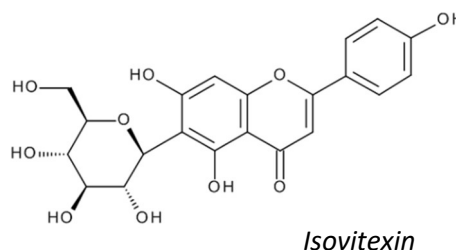
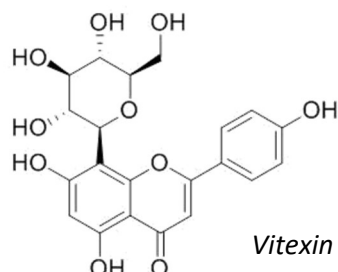
PASSIFLOWER DRY EXTRACT is available from Organic crops.

INCI Name: PASSIFLORA INCARNATA EXTRACT

CAS: 72968-47-9

EINECS: 277-12-7

ANALYTICAL MARKERS: Flavonoids as Vitexin and Isovitexin



Select Botanicals Extracts comply with the requirements of any relevant monograph in the European Pharmacopoeia and/or European Directives applicable to the end use of the extract.

Select Botanical, S.L. manufactures Highest Quality Extracts following strictest Quality Management System in compliance with the "Good Manufacturing Practices" (GMP) requirements, carrying on the last manufacturing steps in classified areas (Clean Rooms).

PHYTOTHERAPY INDICATIONS:

- Indicated in the treatment of tenseness, restlessness, anxiety, and irritability with difficulty in falling sleep. ^(3,7)
- Indicated in the treatment of gastrointestinal spasms and gastrointestinal complaints of nervous origin. ^(1,2,4)
- Traditional herbal medicinal product for relieved mild symptoms of mental stress to aid sleep ⁽⁸⁾

- Sedative ^(3,4,6,7)
- Anxiolytic ^(3,4,7)
- Antispasmodic ^(4,6,7)

ACTIVITIES AND PHARMACOLOGICAL STUDIES:

- **Sedative activity:** after intraperitoneal administration in rats, an alcohol-free hydroethanolic extract at a dosage of 160 mg/kg significantly prolonged sleeping time induced by pentobarbital and, at a dosage of 50-400 mg/kg, reduced spontaneous locomotor activity. ⁽³⁾
- **Anxiolytic activity:** after oral administration in mice of a dry extract of Passionflower containing 2.6% of flavonoids, a significant anxiolytic effect was observed with prolongation of the sleeping time induced by hexobarbital whereas the locomotor activity remained. ⁽³⁾

DOSAGE AND ADMINISTRATION:

Dosage and administration:

Recommended dosage and administration for traditional use are indicated in the Community Herbal Monograph on *Passiflora incarnata* L herba. **EMA/HMPC/669740/ 2013.**

Undesirable effects:

There are no reported toxic effects or intolerance phenomenon to normal use doses. If adverse reactions occur, a doctor or a qualified health care practitioner should be consulted. ^(7,8)

Precautions/Contraindications:

Passionflower should not be used during pregnancy and lactation without medical advice. ^(7,8)

BIBLIOGRAPHY AND OTHER REFERENCE SOURCES:

1. Cañigüeral, S., Vila, R., Wichtl, M. Plantas medicinales y drogas vegetales para infusión y tisana. OEMF international srl. Milán 1998.
2. Fitoterapia. Vademecum de prescripción. Masson, S.A. 3º Ed. Barcelona. 1998
3. ESCOP Monographs. Second edition. 2003.
4. Leung, A. Y., Foster, S. Encyclopedia of Common Natural Ingredients Used in Food, Drugs and Cosmetics. John Wiley & Sons, Inc. 2 nd. Edition. USA. 1996
5. Blumental. The Complete German Commission E Monographs. Therapeutic Guide to Herbal Medicines. American Botanical Council. Austin, Texas 1998.
6. Newall, A. C. , Anderson, L. A. , Phillipson, D. J. Herbal Medicines. The Pharmaceutical Press. 1996.
7. Blumental/Goldberg/Brinckmann. Herbal Medicine. Expanded Commission E Monographs. 2000.
8. Community Herbal Monograph on *Passiflora incarnata* L herba. EMA / HMPC / 669740 /2013. EMA 2014.